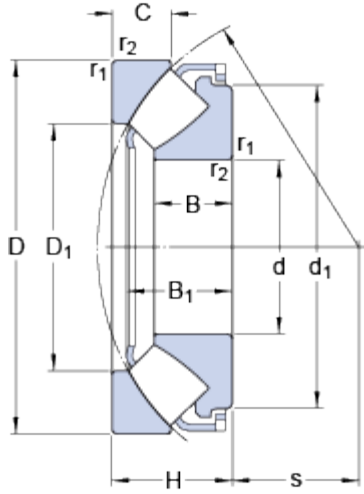


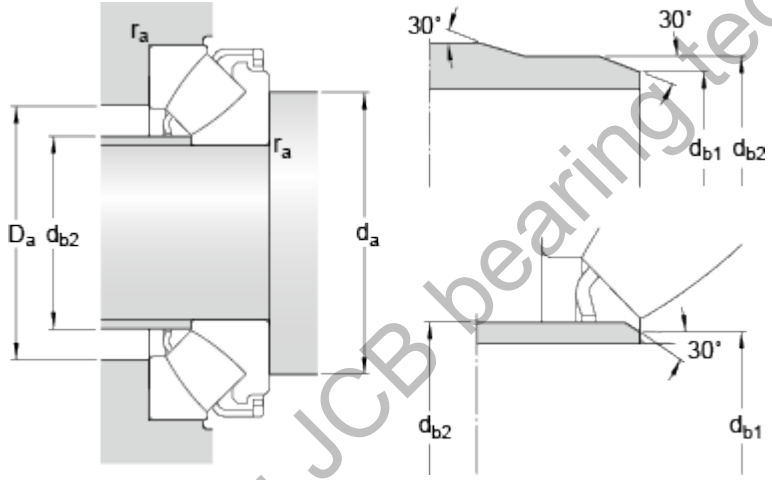
# 29360 E

## Dimensions



d	300	mm
D	480	mm
H	109	mm
d <sub>1</sub>	≈ 434	mm
D <sub>1</sub>	≈ 372	mm
B	70	mm
B <sub>1</sub>	98.9	mm
C	51	mm
s	168	mm
r <sub>1,2</sub>	min. 5	mm

## Abutment dimensions



d <sub>a</sub>	min. 385	mm
d <sub>b1</sub>	max. 313	mm
d <sub>b2</sub>	max. 329	mm
D <sub>a</sub>	max. 423	mm
r <sub>a</sub>	max. 4	mm

## Calculation data

Basic dynamic load rating	C	3100	kN
Basic static load rating	C <sub>0</sub>	10600	kN
Fatigue load limit	P <sub>u</sub>	930	kN
Reference speed		750	r/min
Limiting speed		1200	r/min
Minimum axial load factor	A	11	

## Mass

Mass bearing		75	kg
--------------	--	----	----